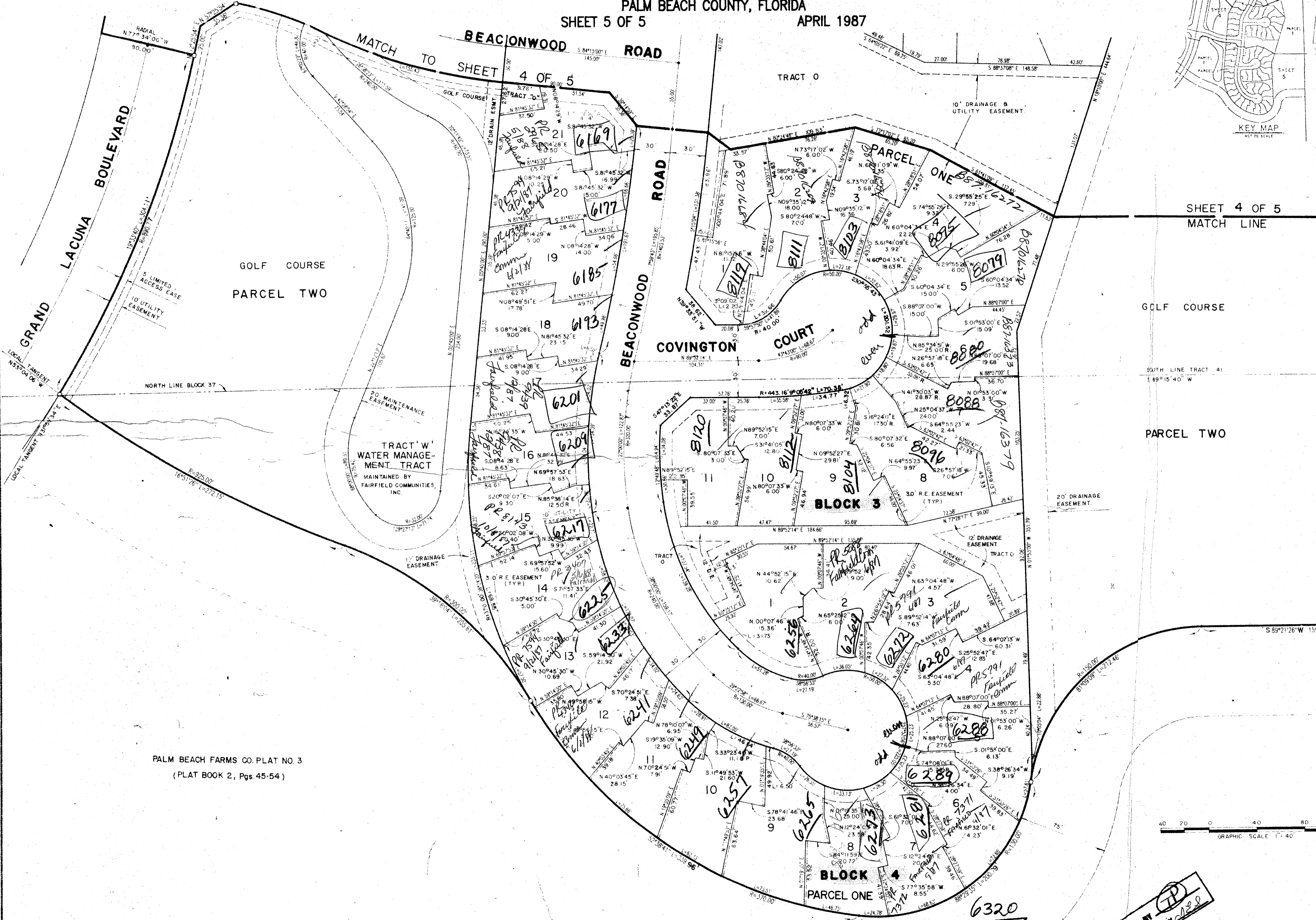
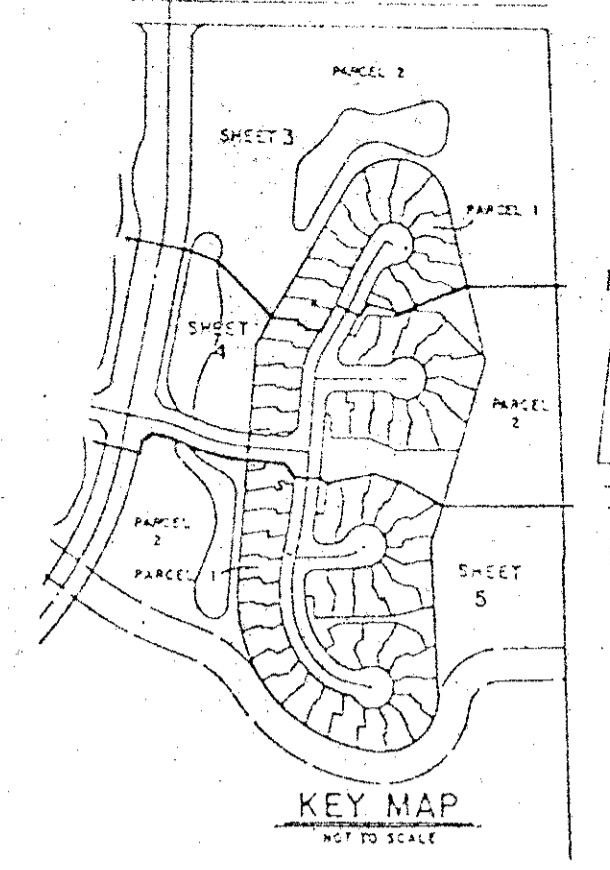


FAIRFIELD'S LACUNA PLAT 3

A PART OF BALMORAL COUNTRY CLUB P.U.D.
PALM BEACH COUNTY, FLORIDA
SHEET 5 OF 5
APRIL 1987

109

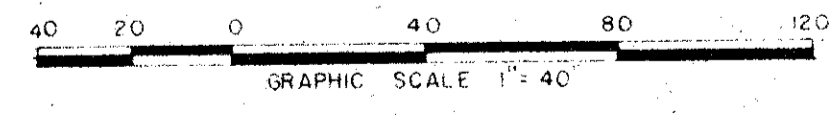
STATE OF FLORIDA
COUNTY OF PALM BEACH
This Plat was filed for record at
M. this _____ day of _____ 19____
and duly recorded in Plat Book No. _____
on Page _____
John B. Dunkle, Clerk Circuit Court
By _____ D.C.



SUBJECT	105
BURDEN	6
FILE NO.	105
OR. B. NO.	3734
PUB. DATE	3/3/87

*Notes: 1/4/87
Fairfield's Lacuna
BLOOD MAP + 160A
ZONING
CODE 33(B)
0603*

PALM BEACH FARMS CO. PLAT NO. 3
(PLAT BOOK 2, Pgs. 45-54)



ADD. BY
CHECKED BY

EASEMENT FOR L.W.D.D. L-16
(O.R.B. 3734, PG. 1836
O.R.B. 3761, PG. 107.)

Landmark Surveying & Mapping Inc.
1500 FOREST HILL BOULEVARD
PH. (305) 433-5415 SUITE 200 W. PALM BEACH, FLORIDA

FAIRFIELD'S LACUNA PLAT 3

*Pet. 81-233
0199-003
56/109*

PLAN HOLD CORPORATION • IRVINE, CALIFORNIA
REORDER BY NUMBER 0754R